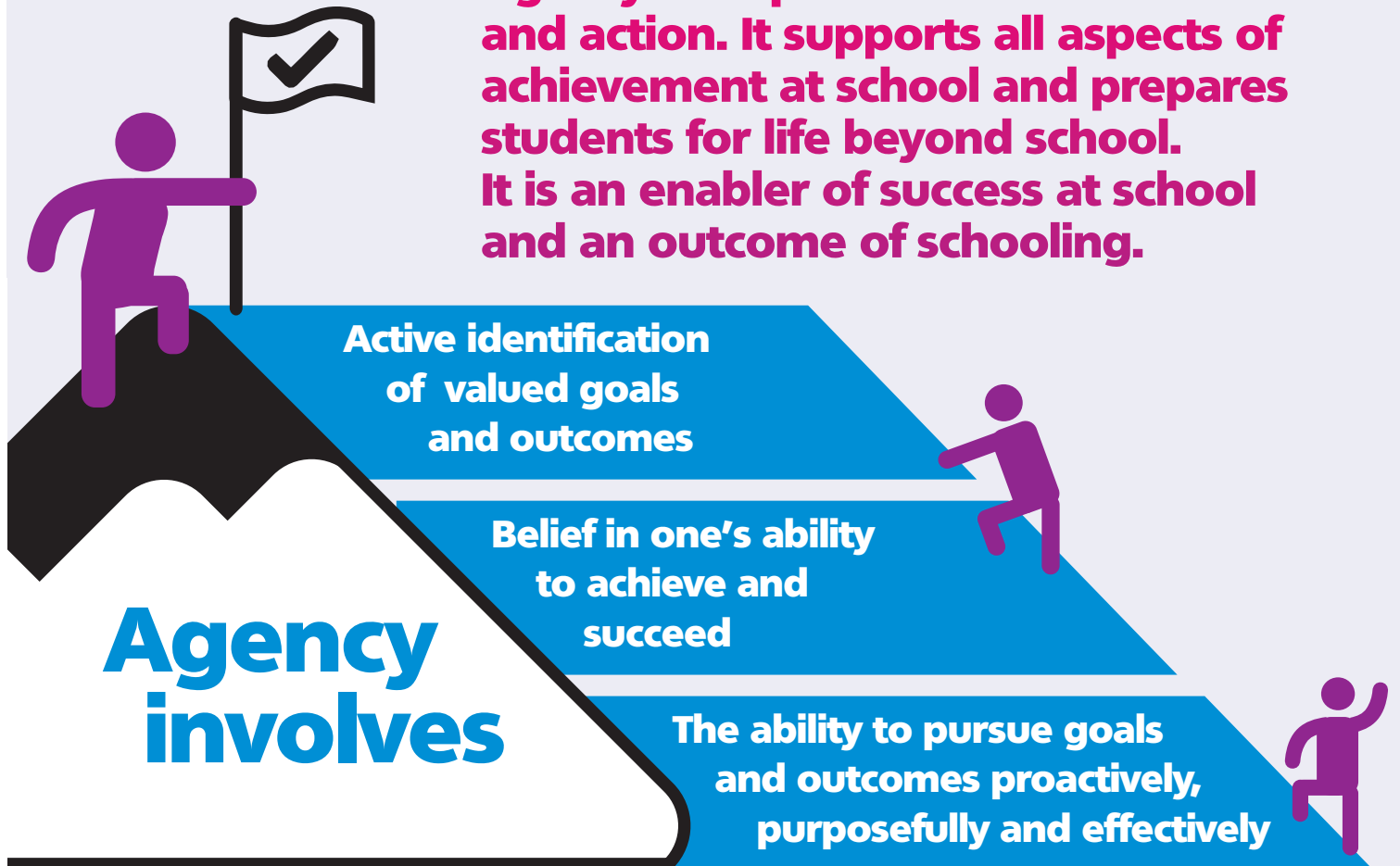




Agency

Agency incorporates both intention and action. It supports all aspects of achievement at school and prepares students for life beyond school. It is an enabler of success at school and an outcome of schooling.



Ways to promote student agency

- Ensuring congruence between students' social and academic identities
- Demonstrating the personal relevance of tasks being undertaken
- Utilising formative assessment to empower students in leading their learning
- Providing a degree of autonomy together with adequate scaffolding and instruction on a 'just-in-time' basis
- Incorporating problem-based learning
- Involving students in the design of learning activities and units

